

MONTHLY MEMBERSHIP PROGRESS REPORT

LOCATION MICHIGAN

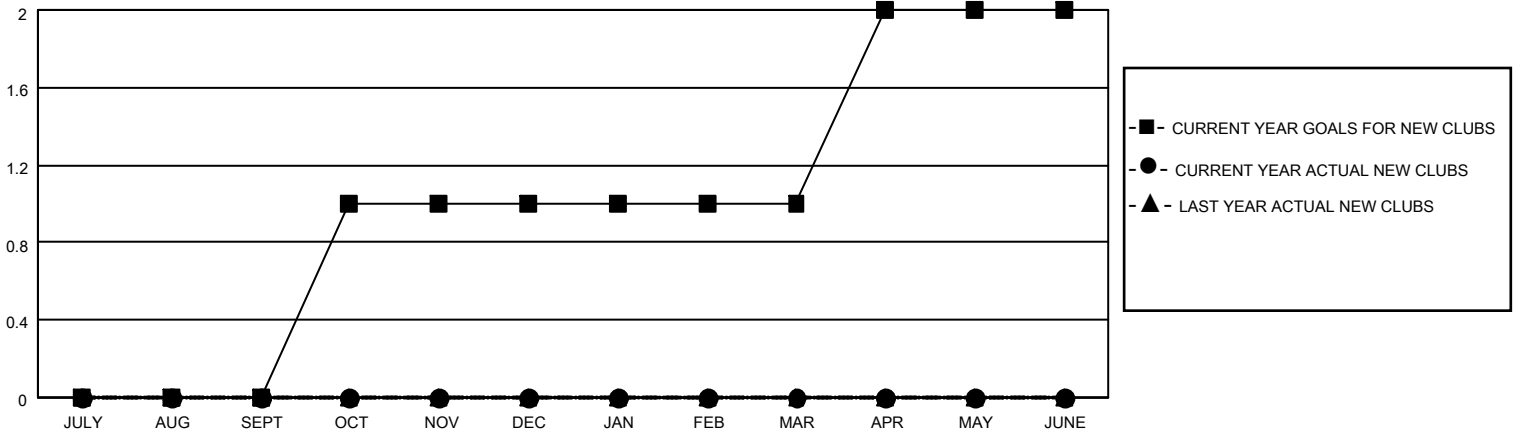
District 11 E2

Results as of: 2/28/2021

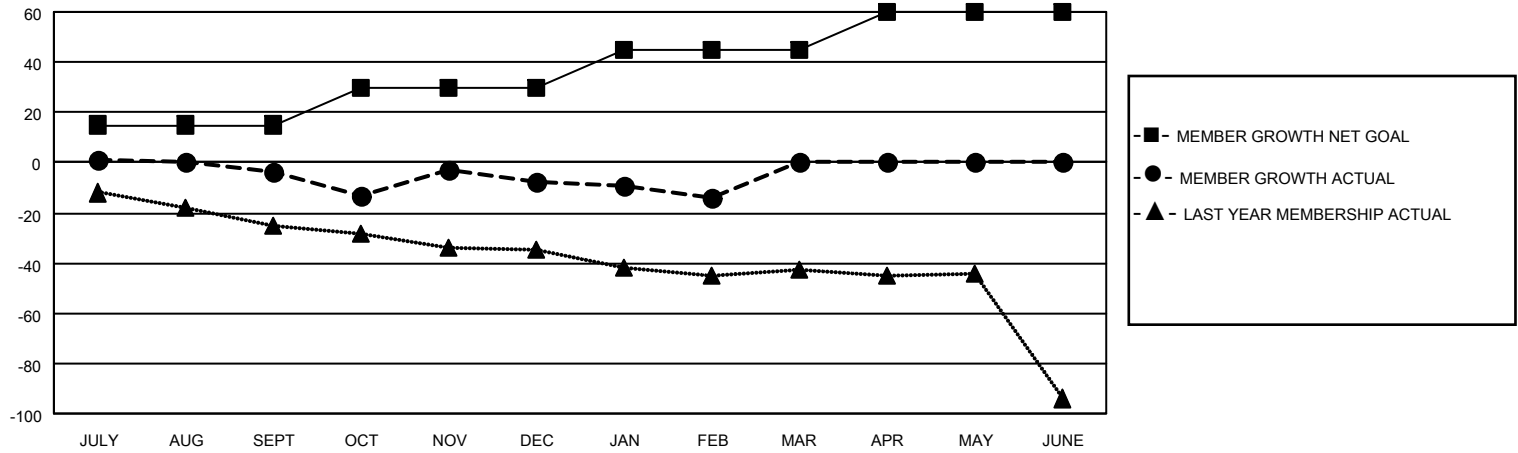
Clubs			
RESULTS FOR 2020-2021			
QUARTER	NEW CLUB GOAL	NEW CLUBS	DROPPED CLUBS
JULY/AUG/SEPT	0	0	2
OCT/NOV/DEC	1	0	0
JAN/FEB/MAR	0	0	0
APR/MAY/JUNE	1	0	0

Members			
RESULTS FOR 2020-2021			
QUARTER	MEMBER GROWTH NET GOAL	MEMBER GROWTH ACTUAL	DROPPED MEMBERS ACTUAL (including transfers)
JULY/AUG/SEPT	15	8	11
OCT/NOV/DEC	15	22	21
JAN/FEB/MAR	15	4	10
APR/MAY/JUNE	15	0	0

GOALS AND ACTUAL NEW CLUBS CUMULATIVE



GOALS AND ACTUAL MEMBERS CUMULATIVE



DROPPED CLUBS: 2	
DROPPED MEMBERS	
DECEASED	7
CLUB CANCELLED	0
OTHER	35
TOTAL	42

12 CLUBS OF 30 ADDED 1 OR MORE NEW MEMBERS

[CLICK HERE FOR CUMULATIVE MEMBERSHIP DATA](#)

<u>GENDER DISTRIBUTION</u>	
MALE	514 (70.90%)
FEMALE	211 (29.10%)

TOTAL FAMILY UNIT MEMBERS	100
FAMILY MEMBERS PAYING HALF DUES	50